

WINNER
EUROPEAN DESIGN
AWARD 2008
'A truly 21st century magazine'
*EDWARDS
magazine

ANOTHER
ARCHITECTURE



MARK

MARK #15
AUGUST / SEPTEMBER 2008

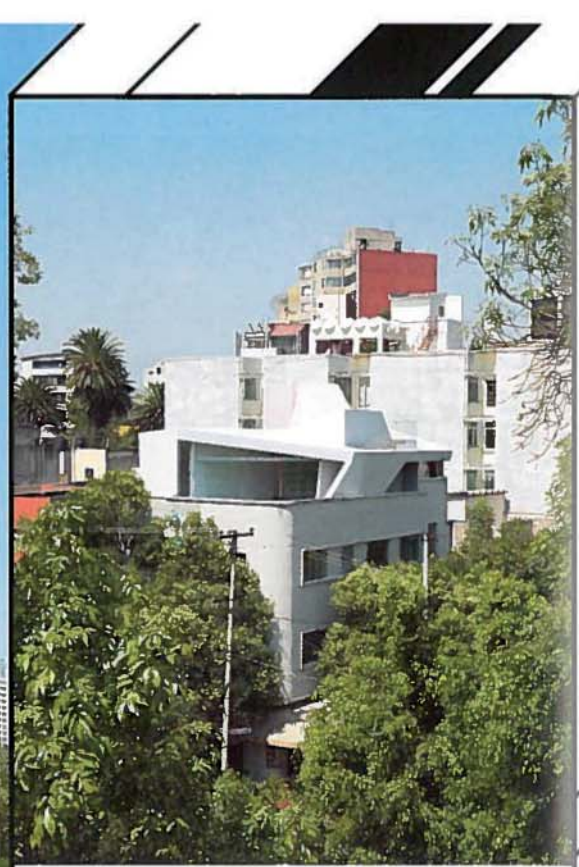
EUROPE €19.95 / UK £ 14
JAPAN ¥ 3,570 / KOREA 40,000WON
CANADA \$ 29.50 / USA \$ 24.95

BY THE MAKERS OF
FRAME

COMPOSITION IN MAJOR

**THE NOISIEST
HOUSE
IN MADRID**

**PLUS: READING,
SHOPPING AND
LEARNING IN
LATIN AMERICA**

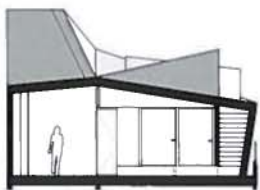


OZULUAMA
2008
LA CONDESA,
MEXICO CITY

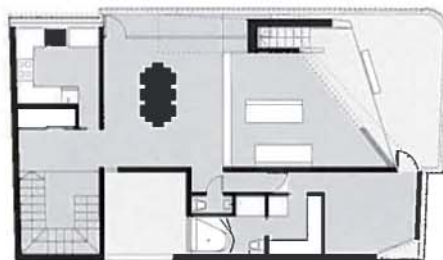
AT103 WITH ARCHITECTS COLLECTIVE

PHOTOS WOLFGANG THALER

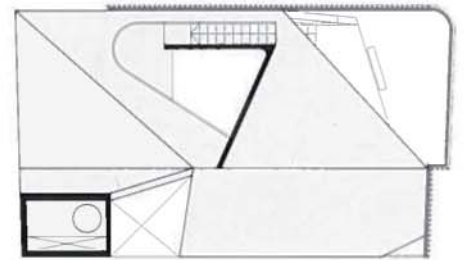
Ozuluama is a new structure set on top of an old apartment building. The new structure resembles a nomad shelter and is made out of large sheets of Corian. The roof is treated as a continuous surface, deformed according to an analysis of the existent building structure and internal circulations. The terrace works as a space in-between the city and the house and is accessible from all rooms.



CROSS SECTION.



PLAN.



ROOF.